



2", 3" & 4" - Demco Type

GATE VALVES

100% interchangeable with Demco® DM Gate Valves.



Butt Weld, Threaded & Flanged

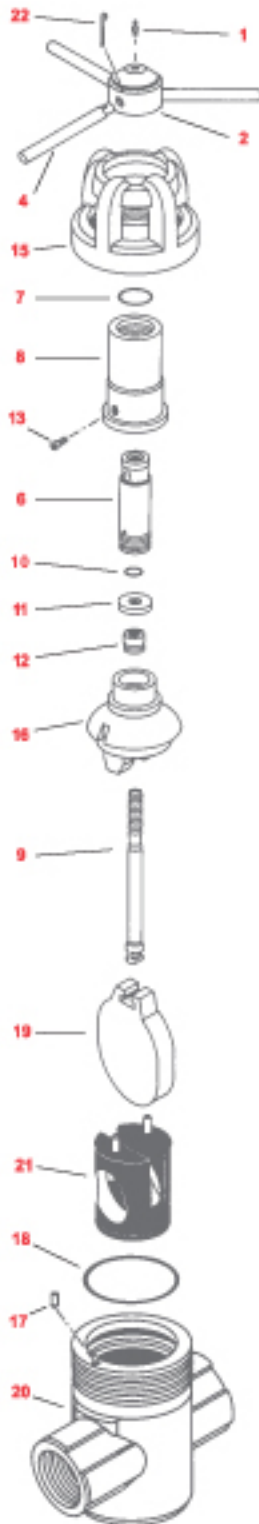
GATE VALVE

DEMCO® TYPE

(100% Interchangeable)



COBRA P/N



2 inch

2" - 2000, 3000 & 5000 W.P.

**2000 WP
3000 WP**

5000 WP

REF.	DESCRIPTION	SIZE	WT.	2"	2"
1	LUBE FITTING Steel		.1#	5195	
2	HUB ASSEMBLY Steel		5#	14687	
4	LOCK HANDLE Steel		1#	1891	
6	STEM SCREW Steel		3#	1913	
7	STEM SCREW SEAL Buna N		.1#	5530 - 224	
8	SCREW HOUSING Steel		4#	1848	
9	STEM 303 SS 316 SS		1#	1931 - 002 1931 - 008	
10	SECONDARY SEAL Buna N		.1#	5530 - 210	
11	RETAINER Steel		1#	1940	
12	STEM SEAL ASSEMBLY (Includes Bronze Bushing) Buna N Viton		.1#	1949 - 001 1949 - 006	
13	LOCK SCREW Steel		.1#	5665 - 22004	
15	COUPLING WCB Steel		16#	1446 - 020	1445 - 030
16	BONNET ANSI 1029 Steel Uncoated Coated		7#	1237 - 020 1237 - 021	
17	INDEX PIN Steel		.1#	1981	
18	BONNET SEAL Buna N Viton		.1#	5530 - 342 5531 - 342	
19	GATE Steel, Nickel Plated 316 SS		3#	1887 - 002 1887 - 008	
20	BODY, UNCOATED Steel SCREWED-API - LP FULL PORT WELD		29#	1285 - 020	1271 - 030
	-SCH. 80		29#	1307 - 120	1309 - 130
	-SCH. XXH			1307 - 220	1309 - 230
	-SCH. 160			1307 - 520	1309 - 530
	FLANGED - RTJ		73#	2039 - 120	1510 - 230
21	SEAT				
	Ductile Iron	- Buna N	1.5#	1878 - 011	1878 - 011
		- Viton		1878 - 012	1878 - 012
	STEEL	- Buna N	1.5#	1878 - 021	1878 - 021
		- Viton		1878 - 022	1878 - 022
	316 SS	- Buna N	1.5#	1878 - 081	1878 - 081
		- Viton		1878 - 082	1878 - 082
22	PIN, LOCK HANDLE Steel		1#	5420 - 18728	
	REPAIR KIT 2" - 6 PCS. 1Ea - Ref. 7,10, 12, 18, 19, 21		6 #	P/N: DGV-25 KRK	

DISCLAIMER: DEMCO IS A REGISTERED TRADE MARK OF ANOTHER COMPANY. COBRA RIG PRODUCTS, INC. IS NO WAY AFFILIATED WITH THIS COMPANY. THE PART NUMBERS LISTED ABOVE ARE FOR IDENTIFICATION PURPOSE ONLY.

To order: Specify a) Size b) Pressure c) End connections



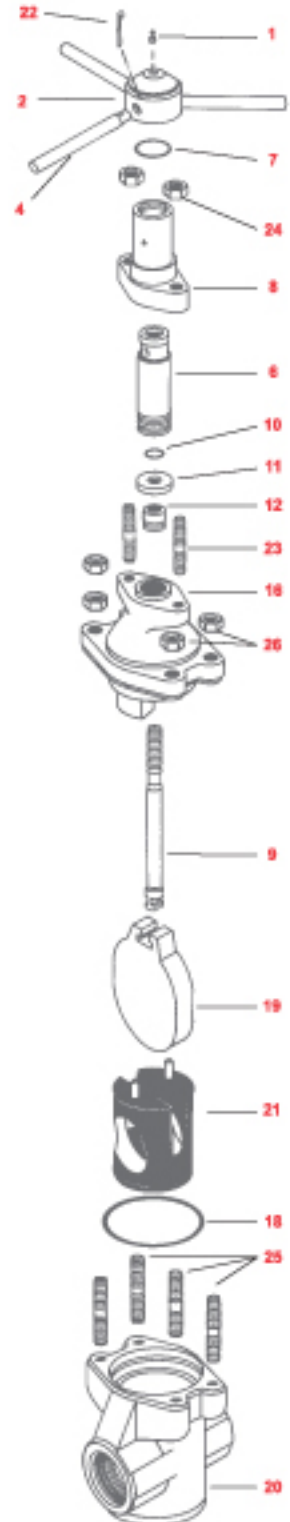
GATE VALVE DEMCO® TYPE

(100% Interchangeable)

COBRA P/N

3" - 3000 & 5000 W.P. / 4" - 3000 W.P.

REF.	DESCRIPTION	SIZE	WT.	3000 WP		
				4" X 3"	4" X 3"	5 X 4"
			3"	3"	4"	
1	LUBE FITTING Steel		.1#	5195	5195	5195
2	HUB ASSEMBLY Steel		10#	14688	14688	14689
4	LOCK HANDLE Steel		1#	1892	1892	1897
6	STEM SCREW Steel		1#	1914 - 003	1914 - 003	1915
7	STEM SCREW SEAL Buna N		.1#	5530 - 226	5530 - 226	5530 - 227
8	SCREW HOUSING Steel		6#	1852	1852	1958
9	STEM 303 SS 316 SS		1# 1#	1932 - 002 1932 - 008	1932 - 002 1932 - 008	1933 - 002 1933 - 008
10	SECONDARY SEAL Buna N		.1#	5530 - 212	5530 - 212	5530 - 214
11	RETAINER Steel		1#	1941	1941	1942
12	STEM SEAL ASSEMBLY (Includes Bronze Bushing) Buna N Viton		.2#	1950 - 001 1950 - 006	1950 - 001 1950 - 006	1951 - 001 1951 - 006
16	BONNET A148 Steel Uncoated Coated		40# 45#	1976 - 030 1976 - 031	1980 - 030 1980 - 031	1977 - 030 1977 - 031
18	BONNET SEAL Buna N Viton		.1#	5530 - 433 5531 - 433	5530 - 433 5531 - 433	5530 - 438 5531 - 439
19	GATE Steel Nickel Plated 316 SS		.1# 9#	1886 - 002 1886 - 008	1886 - 002 1886 - 008	1926 - 002 1926 - 008
20	BODY, UNCOATED, Steel SCREWED-API LP - FULL PORT		71#	1281 - 030	1987 - 030	1855 - 030
	WELD - FULL PORT - SCH. 80 - SCH. XXH - SCH. 160		80#	1787 - 130 1787 - 230 1787 - 530	1286 - 130 1286 - 230 1286 - 530	1014 - 130 1014 - 230 1014 - 530
	FLANGED-RTJ		146#	1455 - 130	1511 - 230	1451 - 130
	WELD - REG. PORT - SCH. 80 - SCH. XXH - SCH. 160		80#	1282 - 130 1282 - 230 1282 - 530	1267 - 130 1267 - 230 1267 - 530	1009 - 130 1009 - 230 1009 - 530
21	SEAT Ductile Iron Steel 316 SS	- Buna N - Viton - Buna N - Viton - Buna N - Viton	4# 8# 4# 8# 4# 8#	1876 - 011 1876 - 012 1876 - 021 1876 - 022 1876 - 081 1876 - 082	1876 - 011 1876 - 012 1876 - 021 1876 - 022 1876 - 081 1876 - 082	2207 - 011 2207 - 012 2207 - 021 2207 - 022 2207 - 081 2207 - 082
22	PIN, LOCK HANDLE Steel		.1#	5420-18732	5420-18732	5420-18732
23	BONNET STUD (2 REQUIRED) A193 B7 Steel		1#	2066	2066	2072
24	BODY STUD NUT (2 REQUIRED) Carbon Steel A194 2 H		.6#	53251- 034	53251- 034	53251- 036
25	BODY STUD (4 REQUIRED) A 193 B7 Steel		2#	2074	32076	2075
26	BODY STUD NUT (4 REQUIRED) Carbon Steel A194 2H		.5#	53251 - 038	53251 - 144	53251 - 042
	REPAIR KITS 3" & 4" - 6 PCS. 1 Ea - Ref. 7, 10, 12, 18, 19, 21		18#	3" P/N: DGV-35 KRK 4" P/N: DGV-43 KRK (Low Pressure)		



3 inch

Testing: COBRA GATE VALVES ARE HYDROSTATICALLY TESTED AFTER ASSEMBLY. THE BODY, STEM SEAL AND SEAT ARE INSPECTED FOR ZERO LEAKAGE UNDER PRESSURE BEFORE SHIPMENT.

Rubber Properties: * **BUNA-N** : IS THE BASIC SEAT ELASTOMER, EXCELLENT FOR PETROLEUM (Nitrile) OILS AND GASES.
* **VITON** : IS HIGHLY RESISTANT TO MINERAL ACIDS AND HYDROCARBONS, GOOD FOR HIGH TEMPERATURE SERVICE (-10° F to 400° F)

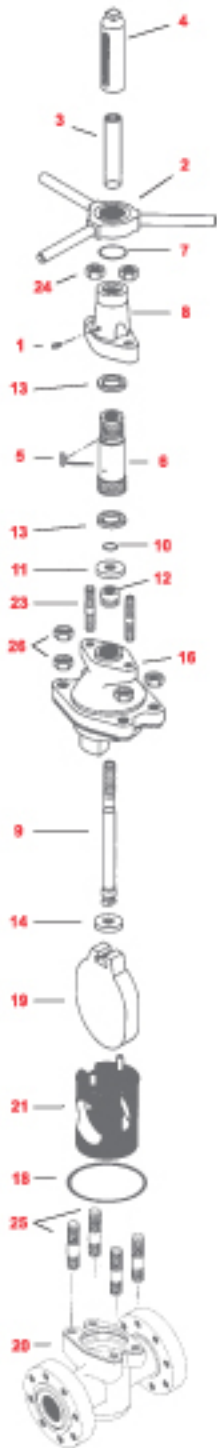
GATE VALVE

DEMCO® TYPE

(100% Interchangeable)



4", 5" x 4" & 6" x 4" - 5000 W.P.



4 & 5
inch

COBRA P/N

REF.	4" - 5000# WP Description	WT.	5" x 4" 6" x 4"
1	LUBE FITTING Steel	.1#	5195
2	HANDLE ASSEMBLY Steel	11#	7414
3	ACT TUBE Acrylic	1#	7459
4	STEM CAP Ductile Iron	3#	7411
5	KEY Steel	.1#	5305-10016
6	STEM SCREW Steel	4#	7416
7	STEM SCREW SEAL Buna N	.1#	5530 - 226
8	SCREW HOUSING Steel	9#	7418
9	STEM 303 SS 316 SS	3# 3#	7439 - 002 7439 - 008
10	SECONDARY SEAL Buna N	.1#	5530 - 214
11	RETAINER Steel	1#	7413
12	STEM SEAL ASSEMBLY (Includes Bronze Bushing) Buna N Viton	.2#	1951 - 001 1951 - 006
13	BEARING (2) Teflon/ Phenolic	.1#	7426
14	DOWN STOP RING 303 SS	1#	7417
16	BONNET-A 148 STEEL Uncoated Coated	62#	7419- 030
18	BONNET SEAL Buna N Viton	.1# .1#	5537- 361 5531- 361

COBRA P/N

REF.	4" - 5000# WP Description	WT.	5" x 4" 6" x 4"
19	GATE Steel, Nickel Plated 316 SS	9#	1926 - 002 1926 - 008
20	BODY *, UNCOATED Steel SCREWED - API LP FULL PORT WELD - FULL PORT 4" - SCH. 80 - SCH. XXH - SCH. 160 FLANGED-RTJ WELD - REG. PORT- 5" x 4" - SCH. 80 - SCH. XXH - SCH. 160 WELD REG. PORT- 6" x 4" - SCH. 80 - SCH. XXH - SCH. 160	120# 120# 260# 116#	1246 - 030 1288 - 130 1288 - 230 1288 - 530 17288 - 230 1249 - 130 1249 - 230 1249 - 530 17287 - 130 17287 - 230 17287 - 530
21	SEAT Steel - Buna N - Viton 316 SS - Buna N - Viton	6# 6#	2207 - 021 2207 - 022 2207 - 081 2207 - 082
23	BONNET STUD (2) A 193 B7 Steel	1#	2072
24	BONNET STUD NUT (2) Carbon Steel A 194 2H	1#	53251 - 036
25	BODY STUD (4) AISI 4140 HT Steel	5#	2077
26	BODY STUD NUT (4) Carbon Steel AISI 414004145 BONNET ASSEMBLY With Gate	2# 102#	15432 1890

* Replacements bodies must include 4 Body Studs.
CAUTION: Test valve assembly including replacement body before use.
Failure to do so may result in leakage and/or personal injury or property damage.

P/N: DGV - 45KRK	REPAIR KIT for 4" - 5000 PSI 1 Ea. Ref 7, 10, 12, 18, 19, 21	6 PCS Weight: 18 Lbs.
------------------	--	---------------------------------

When Quality counts...

...COUNT ON **COBRA!**

Warranty: Cobra Rig Products, Inc. warrants its Drilling Equipment Products to be free from defects in material and workmanship under normal use and service for a period of one (1) year from date of purchase. The liability for any such defects shall be limited to the repair or replacement of such drilling equipment products, or if agreed upon, refund of the purchase price in exchange for the product.